

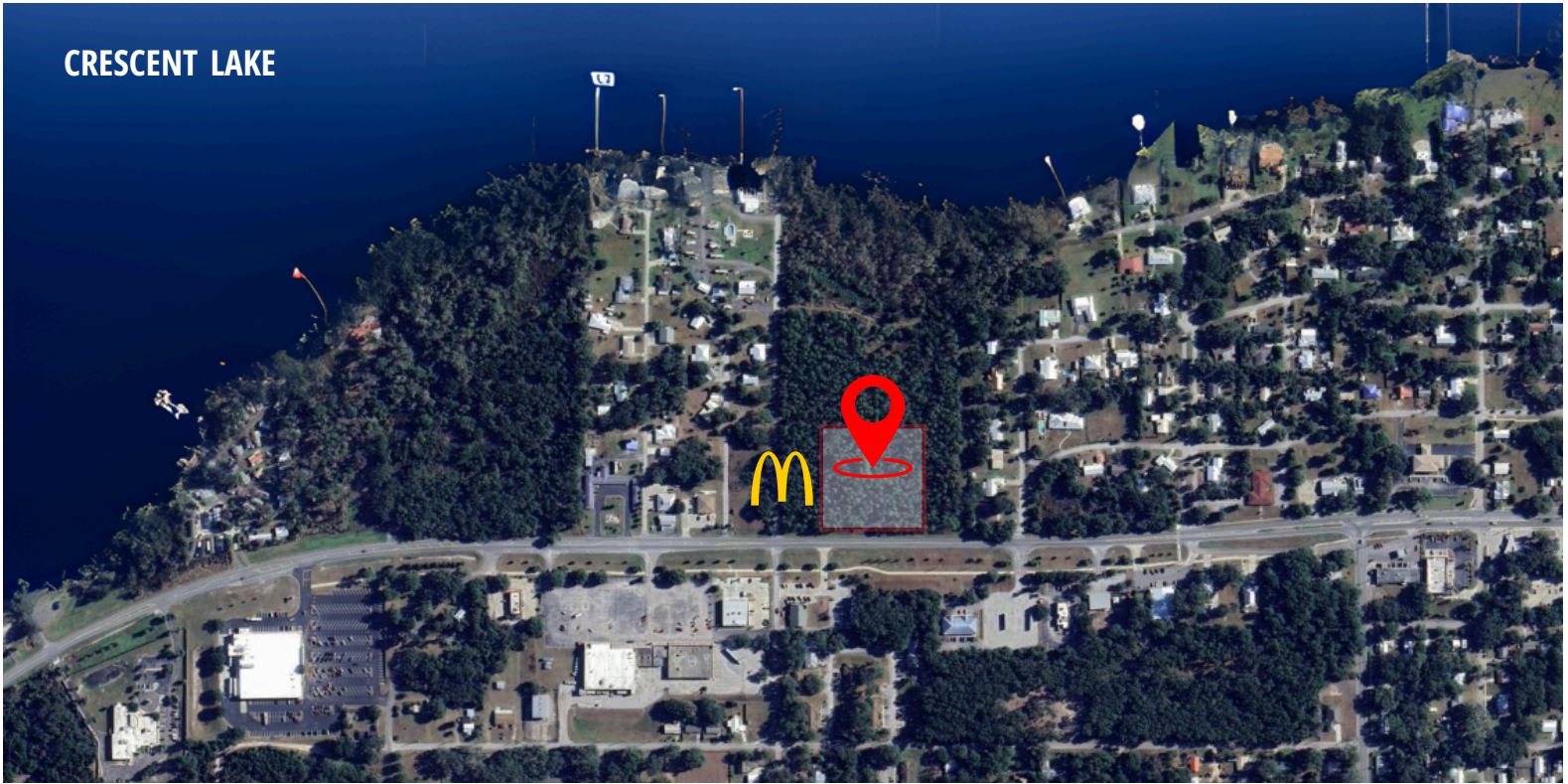


1.25 AC Commercial Land

Available For Sale

North Summit St. at Grove Avenue & Palm Avenue, Crescent City, FL 32112

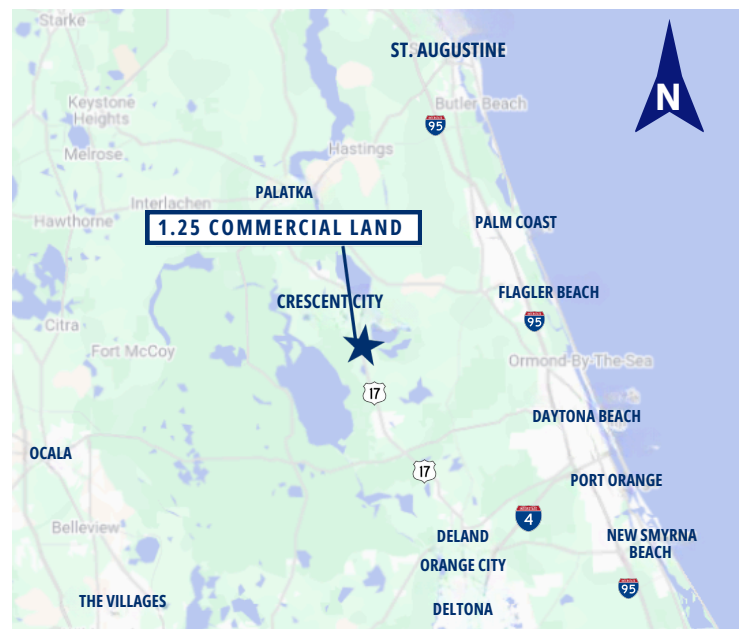
CRESCENT LAKE



HIGHLIGHTS

- **1.25 AC AVAILABLE | COMMERCIAL LAND**
- APN 19-12-28-3350-0600-0000
- Positioned between Jacksonville & Orlando, attracting both locals and tourists.
- High-Visibility & Easy Access
- Brand-new **McDonald's** Adjacent to property
- Located near the **Crescent Fish Camp**, a Waterfront RV Resort & Marina with planned expansions.
- Commercial Growth – Just 15 miles from the upcoming 4,300+ acre **Bass Pro Shops Resort** in Welaka, FL.

MAP



DEMOGRAPHICS

	5 MIN	10 MIN	15 MIN
Population	1,906	5,557	8,498
Households	753	2,145	3,393
Avg. HH Income	\$67,115	\$66,974	\$66,142

*Source: Esri 2025



Erica Atterbury

Associate - Sales & Leasing
(407) 627 - 1314
eatterbury@crossmarcservices.com

Flavia Kanyago

Vice President
(407) 627 - 1310
fkanyago@crossmarcservices.com

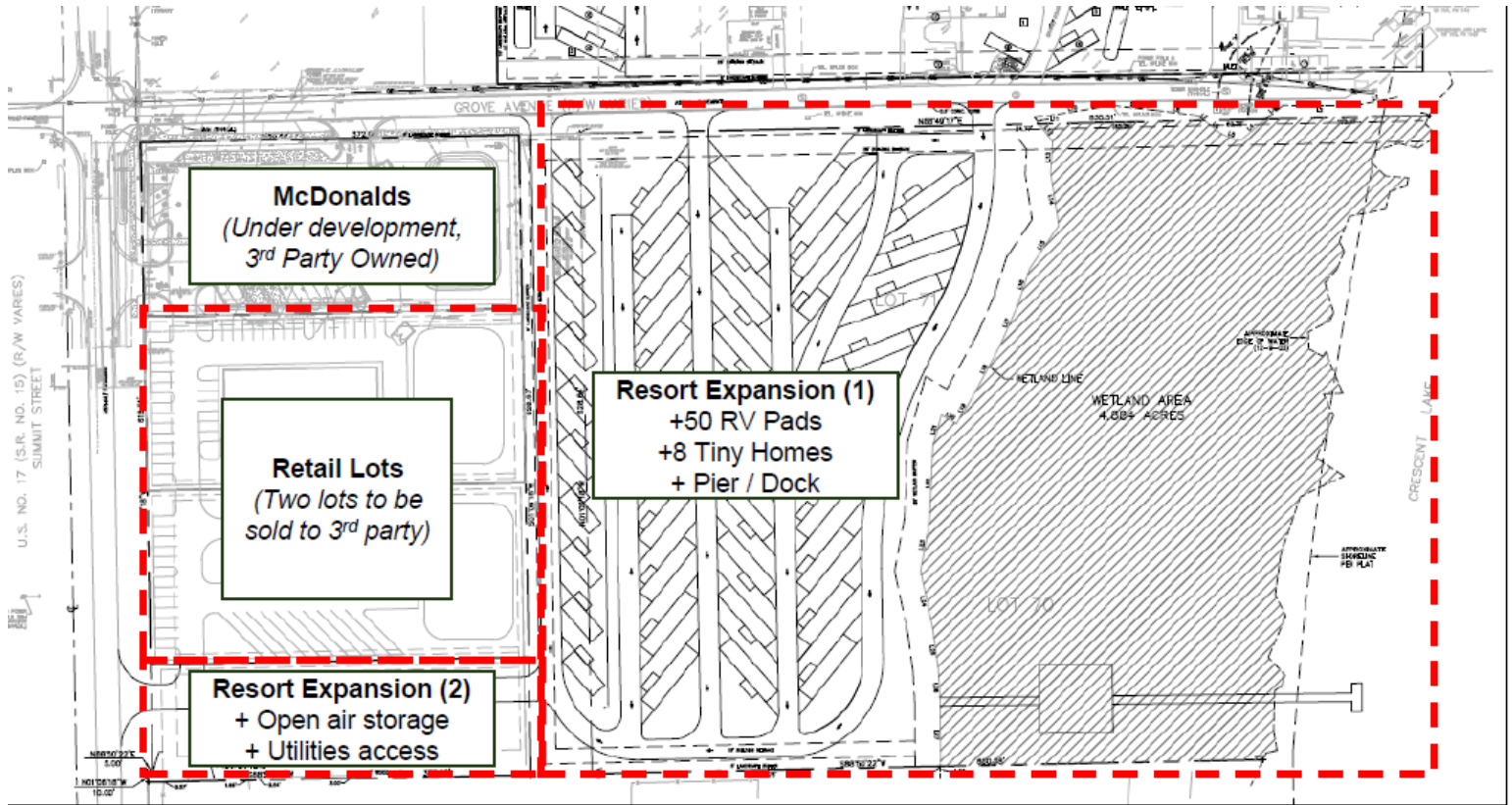
CrossMarc Services, LLC
Licensed Real Estate Broker



1.25 AC Commercial Land

Available For Sale

North Summit St. @ Grove Ave & Palm Ave Crescent City, FL 32112



Erica Atterbury

Associate - Sales & Leasing
(407) 627 - 1314
eatterbury@crossmarcservices.com

Flavia Kanyago

Vice President
(407) 627 - 1310
fkanyago@crossmarcservices.com

CrossMarc Services, LLC
Licensed Real Estate Broker



1.25 AC Commercial Land

Available For Sale

North Summit St. @ Grove Ave & Palm Ave Crescent City, FL 32112



VACANT LAND LOCATED NEAR CRESCENT FISH CAMP

Crescent Fish Camp, situated on the beautiful shores of Crescent Lake, offers a prime location for those seeking a vibrant outdoor destination with ample potential for growth. With its scenic marina, RV resort, and extensive recreational offerings, the area attracts a steady stream of visitors year-round. As the camp continues to expand and draw more outdoor enthusiasts, the surrounding region is poised to experience increased activity and demand for additional amenities, creating a unique opportunity for development and business ventures in the near future.



Erica Atterbury

Associate - Sales & Leasing
(407) 627 - 1314
eatterbury@crossmarcservices.com

Flavia Kanyago

Vice President
(407) 627 - 1310
fkanyago@crossmarcservices.com

CrossMarc Services, LLC
Licensed Real Estate Broker