



# PARK AVE, WINTER PARK

**Swetman Building - 7,000 SF For lease**

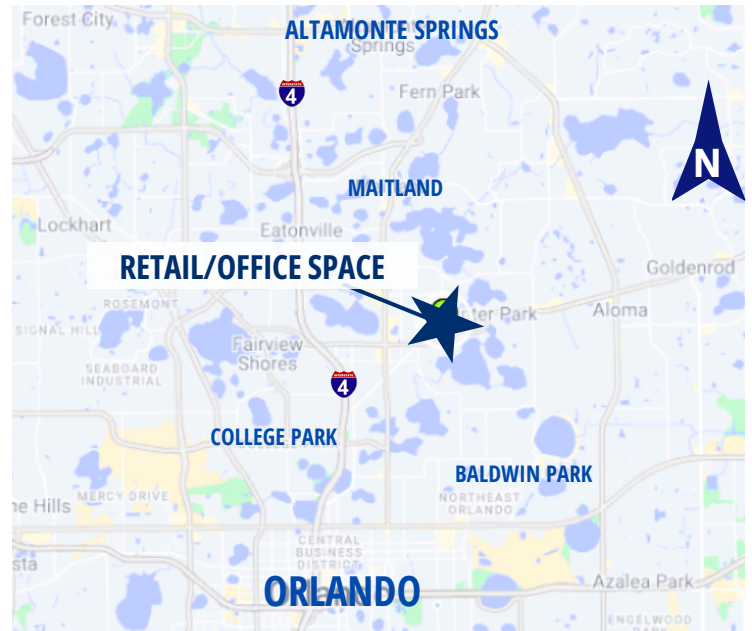
358 N Park Ave, 2<sup>nd</sup> Floor, Winter Park, FL 32789



## HIGHLIGHTS

- **SUITE AVAILABLE at 7,000 SF | 2ND FLOOR SPACE**
- Available for tenant customization
- Across from Winter Park City Hall, walking distance to Rollins College, retail & restaurants.
- **Free parking** in the Winter Park Center Parking Lot
- Second level office space available - 7,000 SF
- Subject property is located on the southeast corner of South Park
- Avenue and East Canton Avenue

## MAP



## DEMOGRAPHICS

	5 MIN	10 MIN	15 MIN
Population	7,980	60,712	223,570
Households	3,439	27,530	103,191
Avg. HH Income	\$212,283	\$170,653	\$133,094

\*Source: ESRI (2025)



**Brian K. Watson, CCIM, MBA**

Vice President, Sales & Leasing

(407) 890-1341

[bwatson@crossmarcservices.com](mailto:bwatson@crossmarcservices.com)

CrossMarc Services, LLC  
Licensed Real Estate Broker

This information was obtained by sources deemed reliable, but we do not warrant or guarantee the accuracy or completeness thereof. Availability of this property is subject to prior sale or withdrawal of the property from the market at any time without notice.

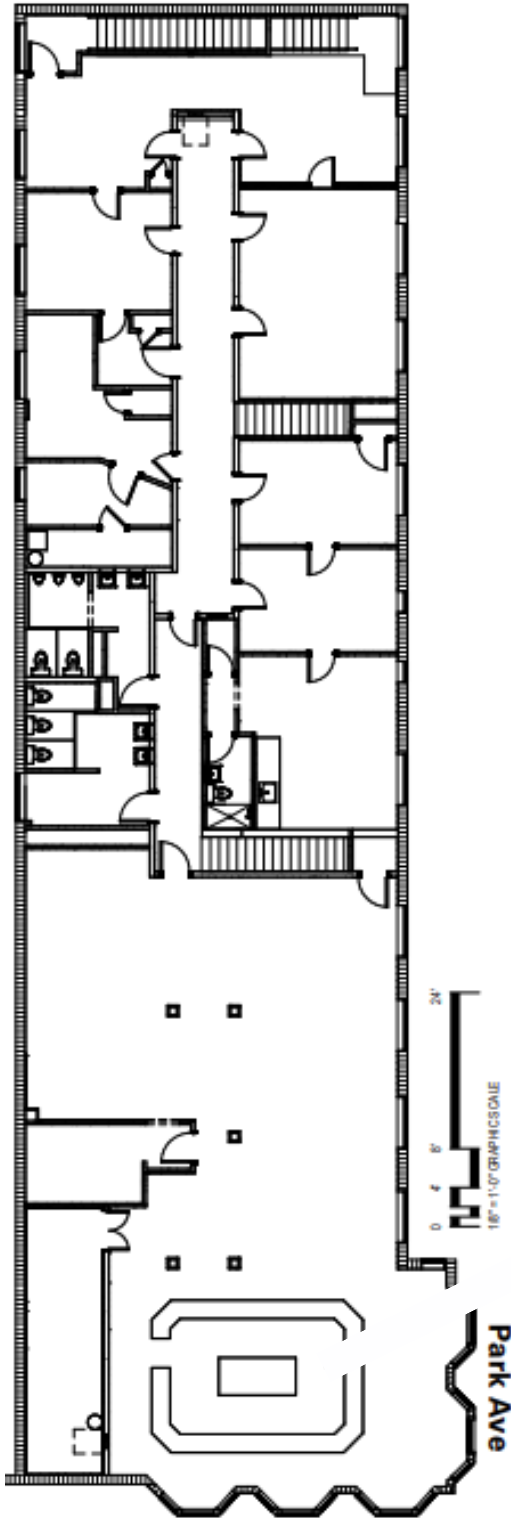




# PARK AVE, WINTER PARK

**Swetman Building - 7,000 SF For lease**

358 N Park Ave, 2<sup>nd</sup> Floor, Winter Park, FL 32789



**Brian K. Watson, CCIM, MBA**

Vice President, Sales & Leasing

(407) 890-1341

[bwatson@crossmarcservices.com](mailto:bwatson@crossmarcservices.com)

CrossMarc Services, LLC  
Licensed Real Estate Broker

This information was obtained by sources deemed reliable, but we do not warrant or guarantee the accuracy or completeness thereof. Availability of this property is subject to prior sale or withdrawal of the property from the market at any time without notice.